

EAST COAST

HOME

+ DESIGN



\$5.95 Jan/Feb 2010

PRRST STD
US POSTAGE
PAID
STAMFORD, CT
PERMIT NO. 254



Kitchen Cookbook

St. Charles of New York

Rhapsody in Blue

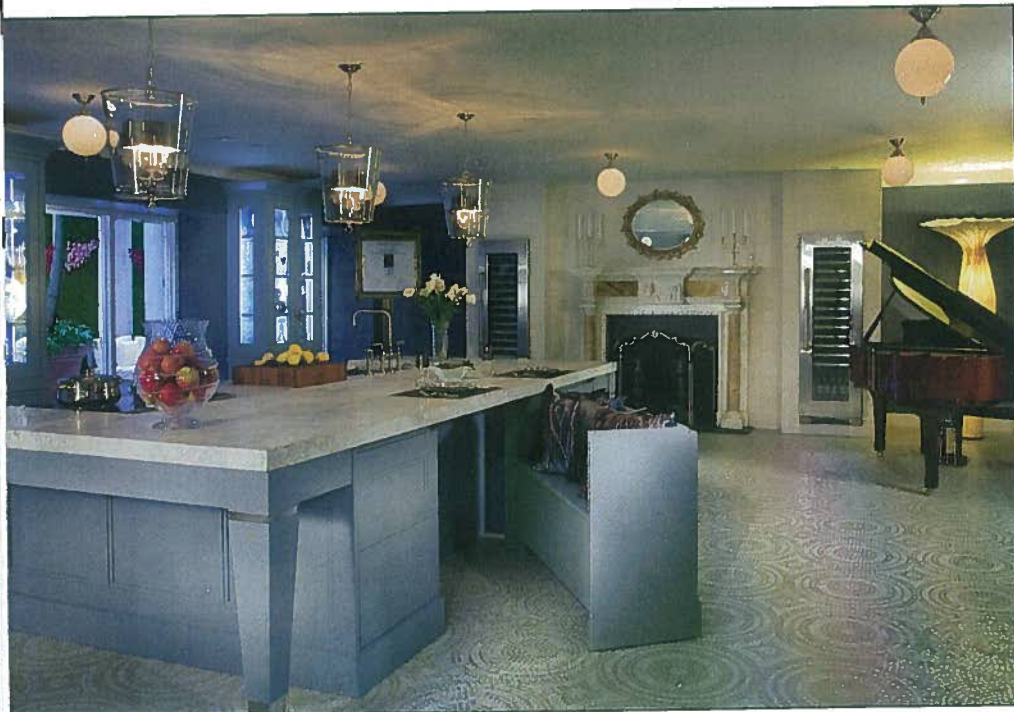
St. Charles of New York's 'Rhapsody in Blue' custom kitchen for the 37th Annual Kips Bay Decorator Show House is a nod to the rhythms of the Gershwin era played with a contemporary beat. The 1,000 sq ft garden-level kitchen is designed to accommodate the needs and tastes of today's discerning homeowner.

St. Charles of New York's principal design team, Karen Williams and Robert Schwartz, pay tribute to the glamour of the Jazz Age with a contemporary sensibility. Accented in cool notes of smoky blues and limestone inspired by the mansion's grand facade, the kitchen opens to

a sunlit, garden solarium with a floor plan thoughtfully-designed to be as functional as it is fashionable.

Karen Williams explains "Our goal was to design a fluid space with four multi-tasking 'lifestyle' vignettes—a continental breakfast bar featuring a concealed appliance center, a cooking hearth highlighting Electrolux ICON® appliances and refrigeration, a 12-foot kitchen island that cleverly converts to a banquet for extra seating, and a designated wine area complete with fireplace and tasting table."

"The limestone exterior is echoed in the cooking hearth and fireplace, as well as the large floor-to-ceiling tiles," states



Robert Schwartz. "We incorporate many of the latest consumer trends into this kitchen including the use of maintenance free materials, cleaner design motifs and softer, more contemporary styling with transitional overtones."

Jewel-toned, silk-covered lighting elements illuminate the entryway and lead to a spectacular mahogany baby grand piano that represents the still-lingering notes of the bygone Jazz Age. Standout design highlights include the exotic Calacatta Pueschetta Marble of the central kitchen island and induction cook top, and a discreet and streamlined wine cellar with two state-of-the-art wine towers.



An iridescent Italian glass mosaic floor accentuates the play of light, refracting the blue hues throughout the space. The 'Rhapsody in Blue' theme is realized in touches throughout such as in the illuminated glass door pantry cabinetry. A circa 1850 antique marble fireplace adds warmth and interest, and is further evidence of St. Charles of New York's characteristic attention to fine detail.

St. Charles New York
 A&D Building
 150 East 58th Street, #8
 New York, NY (212) 838-2812
www.stcharlesofnewyork.com

